

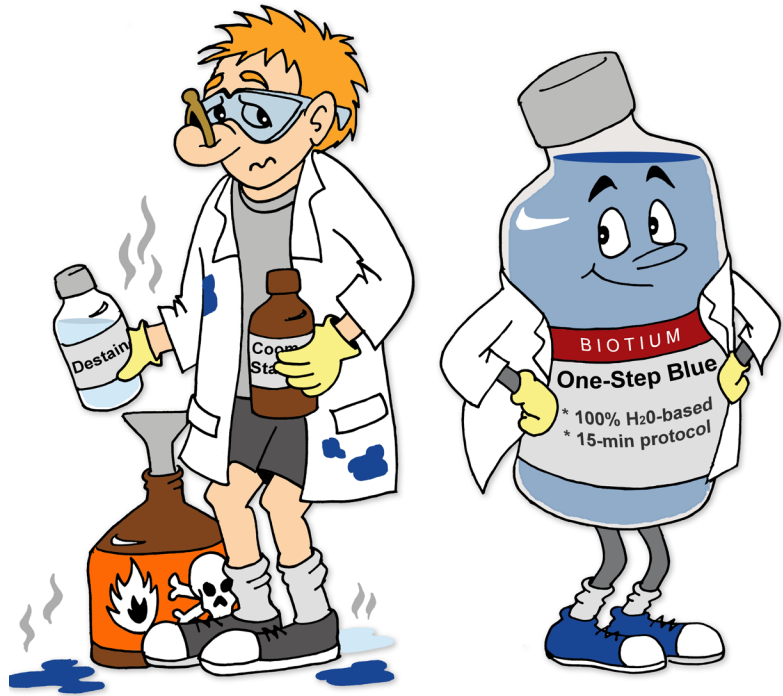
Protein Gel Stains

One-step, non-toxic protein staining

Colorimetric and fluorogenic protein gel stains

One-Step Advantages

- Fast, one-step
- Non-toxic, easy disposal
- No stinky acetic acid
- No toxic methanol
- No gel shrinkage
- No microwaving
- No destaining
- No fixing



One-Step Blue®

- Replaces tedious Coomassie staining for visible blue imaging of bands
- Optional near-infrared fluorescence detection with NIR imaging systems (such as Odyssey®)

One-Step Lumitein™

- Replaces time-consuming and expensive SYPRO® Ruby gel stain for fluorescence-based imaging
- Detect with a laser-based fluorescence scanner (such as Typhoon®) or a UV gel box

One-Step Lumitein™ UV

- Replaces Oriole® fluorescent gel stain
- Does not cause gel shrinkage
- Best dye for detection with a UV gel box

Our protein stains are certified under CCR Title 22 as non-toxic to the environment

One-Step Blue®

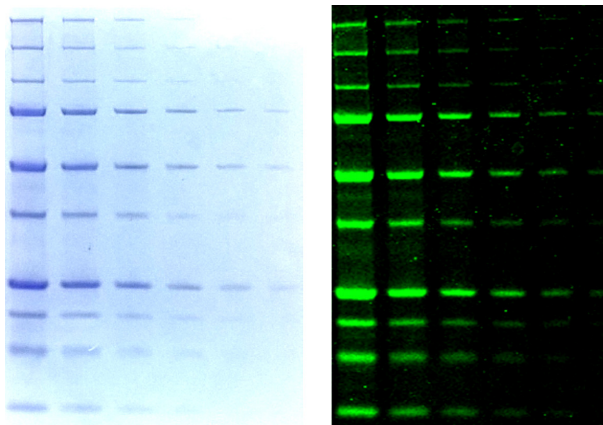


Figure 1. A protein ladder was loaded onto an SDS PAGE gel in 2-fold dilutions, and the gel was stained with One-Step Blue®. One-Step Blue® staining can be visualized as visible blue bands (left), or NIR fluorescence (right).

One-Step Lumitein™

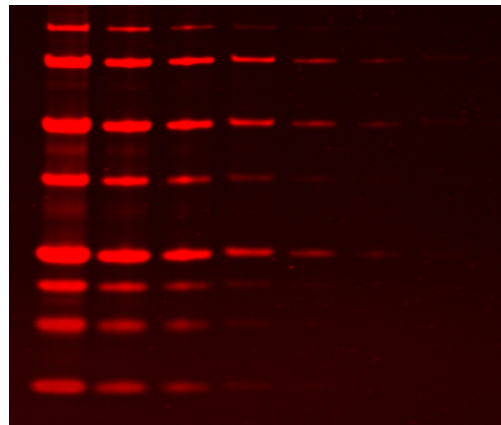


Figure 2. A protein ladder was loaded onto an SDS PAGE gel in 2-fold dilutions, and the gel was stained with One-Step Lumitein™. One-Step Lumitein™ fluorescent staining can be visualized on the Typhoon® or with a UV gel box.

One-Step Lumitein™ UV vs Oriole®

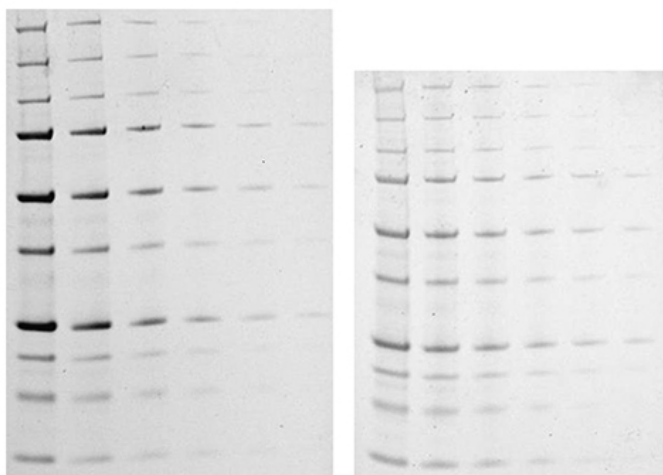


Figure 3. Identical SDS-PAGE gels were stained with One-Step Lumitein™ UV (left), or Oriole® (right). The gels began as the same size, but staining with Oriole® shrinks the gel.

One-Step Safety

- One-Step stains have non-toxic formulations for safer handling and easy disposal.
- One-Step stains are certified under CCR Title 22 as non-toxic to the environment for drain disposal after a simple pH neutralization step.

Ordering Information

Cat. #	Product name	Size
21003-1L	One-Step Blue® Protein Gel Stain	1 L
21004-1L	One-Step Lumitein™ Protein Gel Stain	1 L
21004-4L	One-Step Lumitein™ Protein Gel Stain	4 L
21005-1L	One-Step Lumitein™ UV Protein Gel Stain	1 L
21005-4L	One-Step Lumitein™ UV Protein Gel Stain	4 L
21530-500uL	Peacock™ Prestained Protein Marker	500 uL
21531-500uL	Peacock™ Plus Prestained Protein Marker	500 uL

One-Step Blue is a registered trademark of Biotium.

Lumitein is a trademark of Biotium.

Oriole is a registered trademark of Bio-Rad Laboratories; Odyssey is a registered trademark of LI-COR Inc.; Typhoon is a registered trademark of GE Healthcare.

www.biotium.com

General Inquiries: order@biotium.com

Technical Support: techsupport@biotium.com

Phone: 800-304-5357

